



Monde Raffle
Residence

“An Iconic Colonial Architectural”



MONDERAFFLE



MONDE RAFFLE RESIDENCE



Sir Thomas Stamford Raffles (1781 - 1826)

The word “Raffle” in Monde Raffle Residence is inspired by the name Raffles – in full name : Sir Thomas Stamford Raffles, born July 6, 1781, at sea, off Port Morant, Jam.—died July 5, 1826, London, Eng.), British East Indian administrator and founder of the port city of Singapore (1819), who was largely responsible for the creation of Britain’s Far Eastern empire.

Monde Raffle Residence is worth affordable residential you may choose to own and live in, where the heritage colonial characteristic is served as the iconic benchmark to elevate your living taste and design purpose. It is located at one of the most lively district of Batam, offers a new chapter of breathing new life, which is well uniquely carved at its best with adequate facilities built into the space to ensure that the ambience, the charm, and the heritage characteristic are well served, hence meet the taste of unusual seen in typical class of product.

SITE PLAN

- Type 88+ (100)

Type 45
- Type 78+ (80)

Shophouse

- 1

Cluster Main Gate
- 2

Boulevard Garden & Jogging Track
- 3

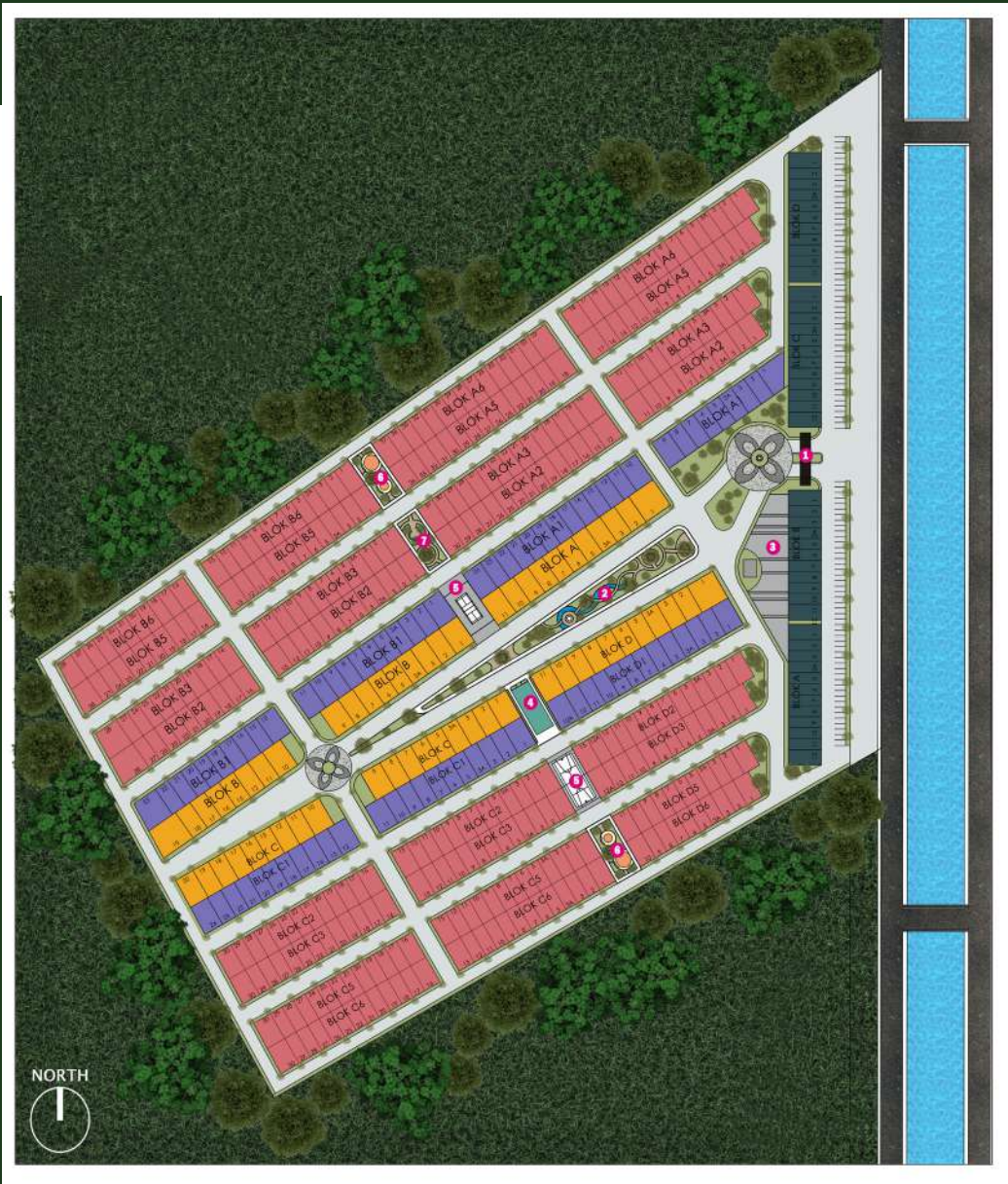
Commercial Park
- 4

Indoor Gym
- 5

Multipurpose Court
- 6

Kids Playground
- 7

Barbeque Pit & Family Park



OUR SURROUNDINGS



High Accessibility

- International Ferry Terminal

10 Minutes
- Mega Wisata Ocarina

5 Minutes
- One Batam Mall

8 Minutes
- Masjid Raya Batam

10 Minutes
- Area Pemerintahan

10 Minutes
- RS Awal Bros

15 Minutes

MASTERPLAN



- | | | | |
|------------------------------|-------------------|----------------------|------------------------------------|
| 1 Cluster Main Gate | 3 Commercial Park | 5 Multipurpose Court | 7 Boulevard Garden & Jogging Track |
| 2 Barbeque Pit & Family Park | 4 Indoor Gym | 6 Kids Playground | |

MAIN GATE



Allow us to worry about security and safety for you, thus you can focus on the joys of your new way of living

SHOPHOUSE



An array of retail and F&B outlets which are integrated with commercial park at Monde Raffle double façade shophouses will add color and flavor to your new lifestyle

Type 88+ (100)

Unit Plan

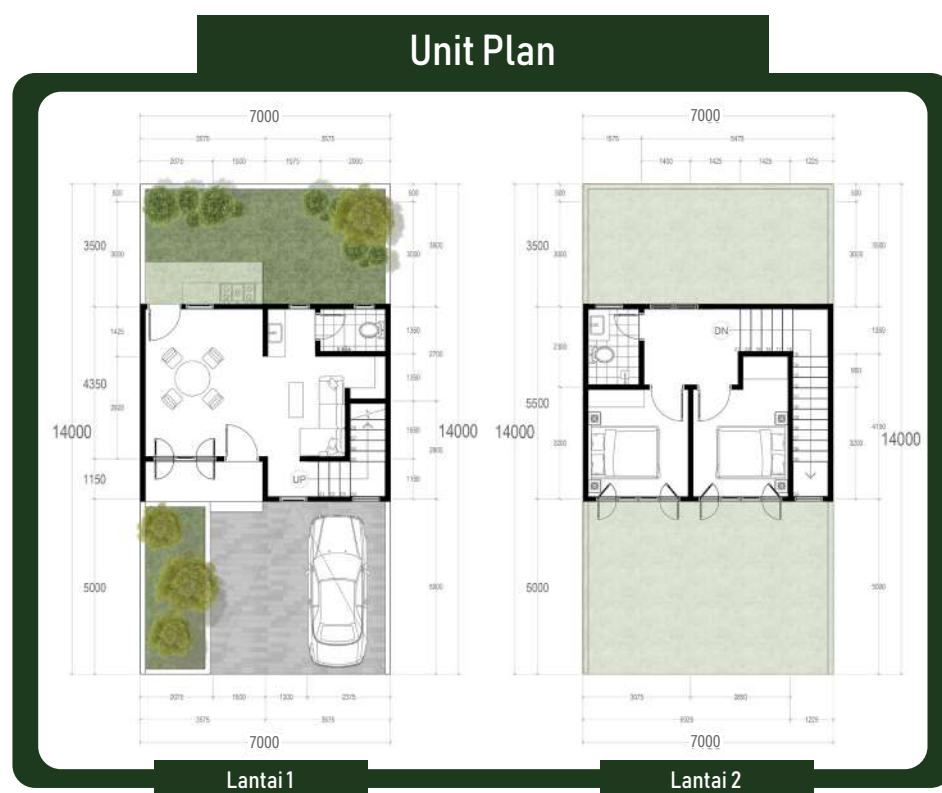


Lantai 1

Lantai 2



A mature colonial design creates unexceptionally comfortable homes where you can truly be yourself and spend quality time in

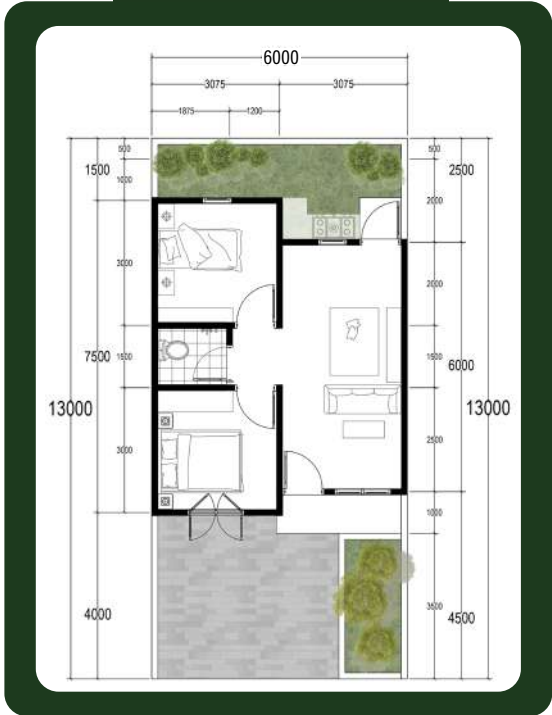


Type 78+ (80)



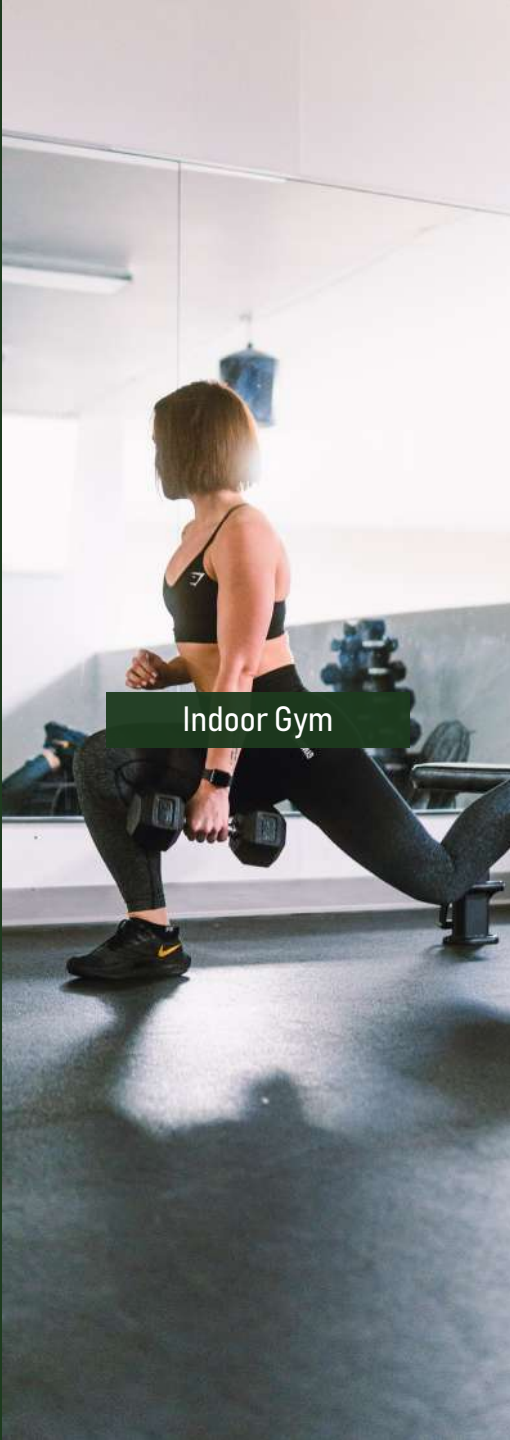
Efficiently & spacious designed to create convenient and comfortable living

Type 45



Affordable piece of modern colonial design at its best, with adequate facilities built into the space

FACILITIES



Indoor Gym



BBQ Pit



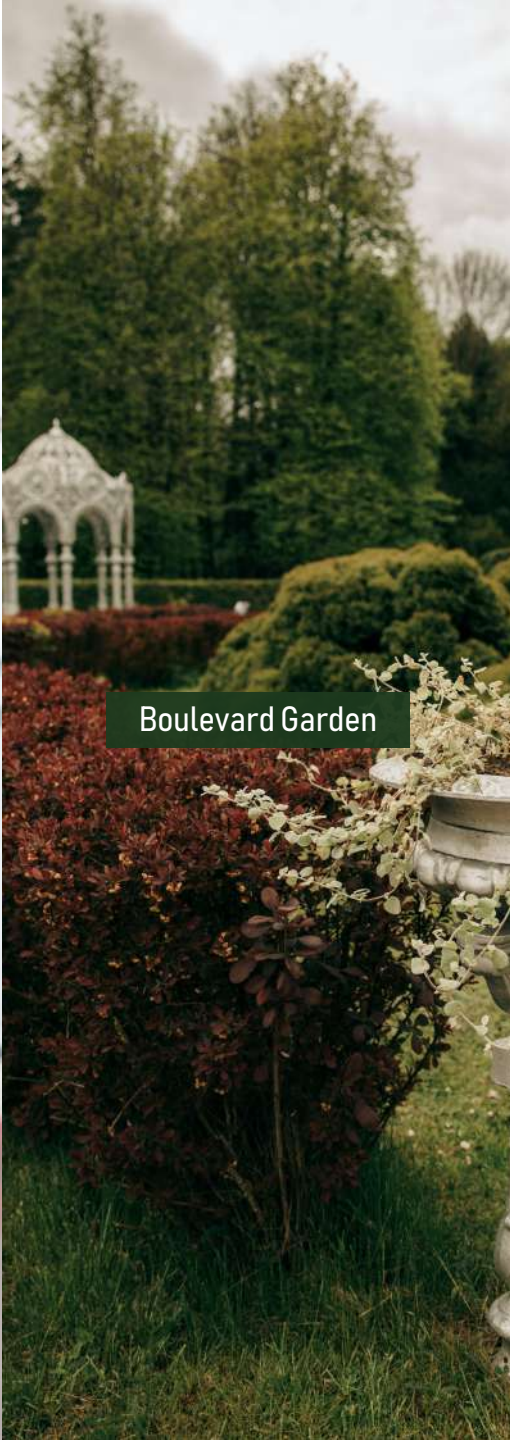
Kids Playground



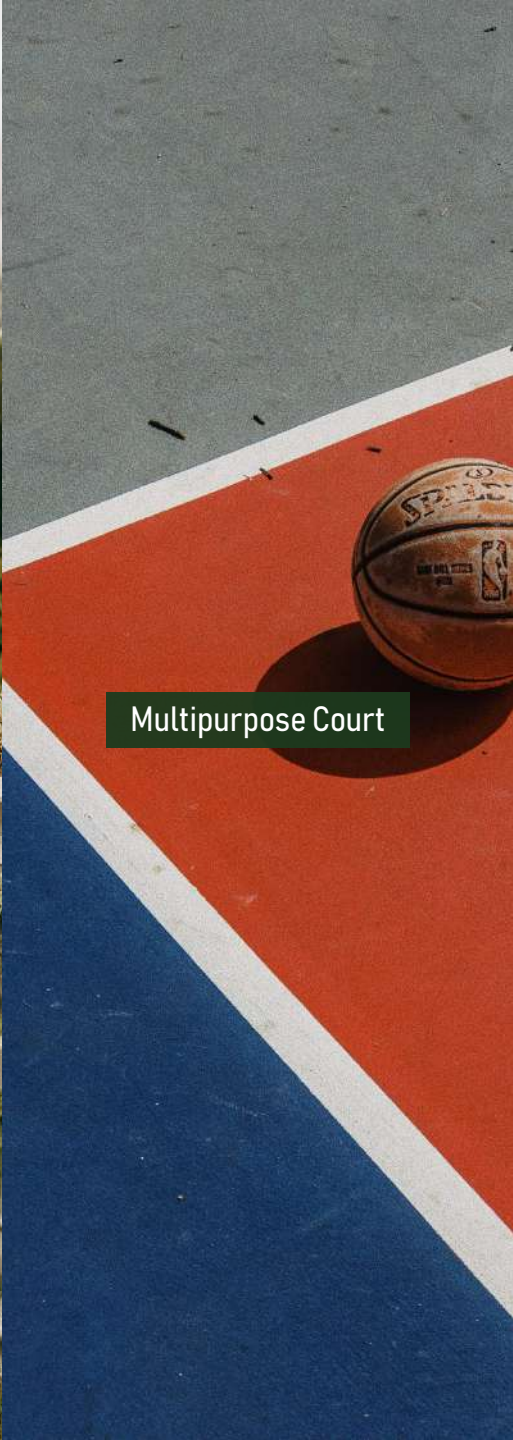
Commercial Park



Jogging Track



Boulevard Garden

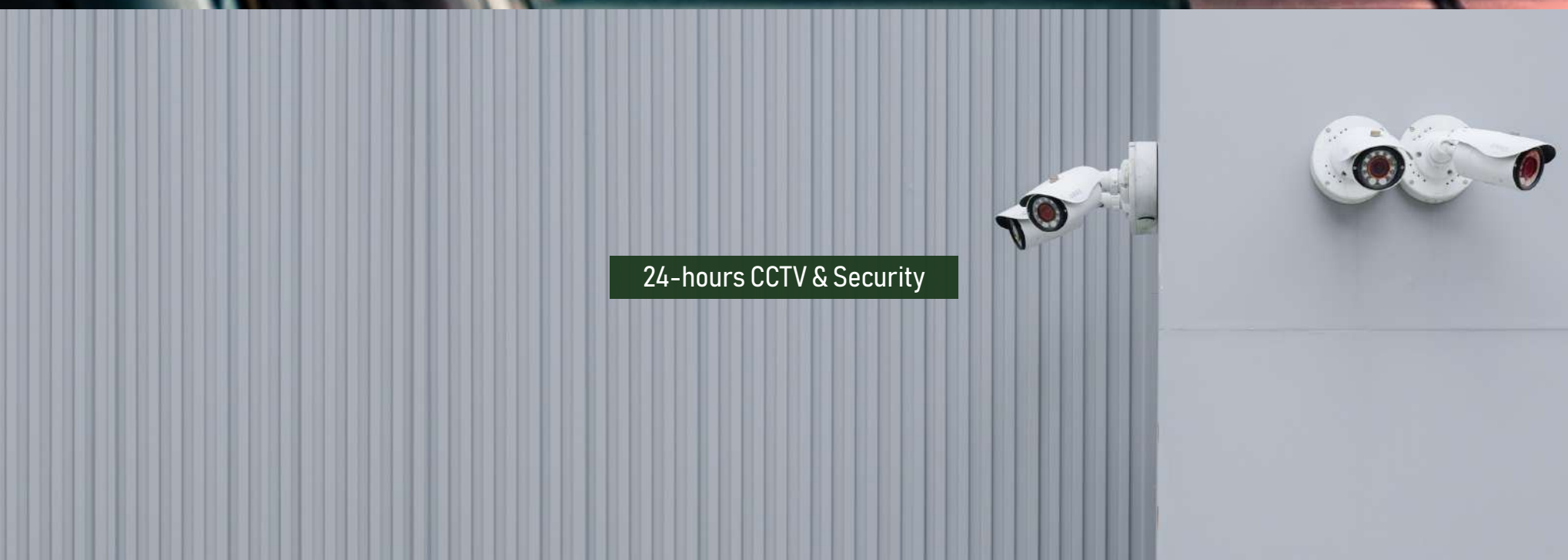


Multipurpose Court

SUPPORTING FACILITIES



Underground Facilities



24-hours CCTV & Security



Autogate System

SPEIFICATION



Foundation	: Piling
Wall	: 100% Red Brick
Roof	: Roof Tile
Indoor Floor	: Homogeneous Tiles 60x60
Main Door	: Solid Wood
Window	: Aluminium Frame with Glass
Ceiling	: Painted Gypsum Board
Sanitary	: Jet Washer, Shower, Wastafel
Electricity	: 10A / 2200W

High Quality Development

- Underground Utilities System
- Higher Ground Elevation
- Wide Row 8-15m

BANK ACCOUNT

Bank	: BNI
Account Number	: 788 989 7654
Account Name	: PT Puri Global Sukses Tbk

Scan Me



Monde Raffle

Proudly Developed by



PT. PURI GLOBAL SUKSES Tbk
DEVELOPER



HIGHLY COMMEND

BEST BREAKTHROUGH
DEVELOPER



PURIGLOALSUKSES



PT PURI GLOBAL SUKSES

Komplek Ruko Mahkota Raya Blok D No.12A, Batam Center, Batam

